

SAFETY CUTTERS

Distractions and loss of concentration -

especially if you're handling blades or knives- could lead to serious injuries. Furthermore, ordinary cutters force you to adopt unnatural and straining handling postures, creating unnecessary risks.

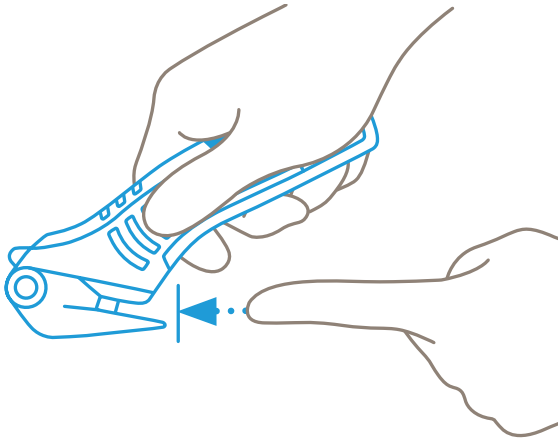
Reduce the costs of knife-related workplace accidents and injuries by investing in safety cutters! Equip your employees with tools designed for efficiency and safety for a safer and more productive workplace.

Common causes of cut injuries at work:

- Lapse in attention
- Leaving blades exposed
- Improper training
- Lack of established safety procedures
- Blunt cutters



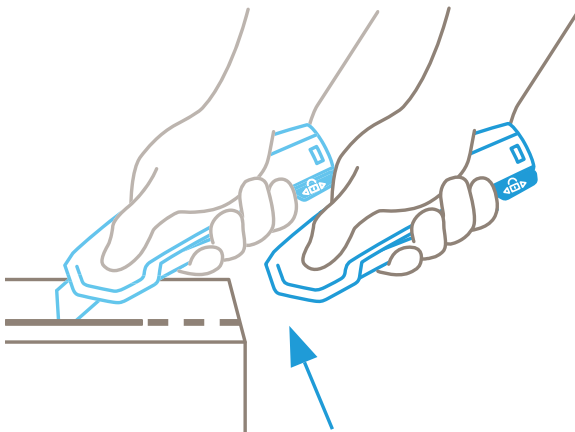
TECHNOLOGIES OF SAFETY CUTTERS



SECUMAX

CONCEALED BLADE= MAXIMUM SAFETY

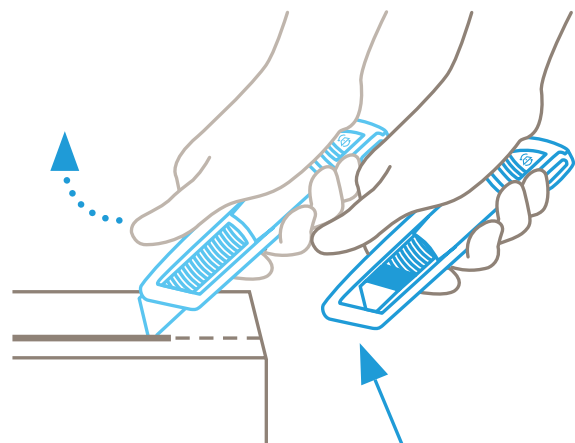
The blade is not open, but concealed, and therefore the cutting edge is shielded from you and the packaged goods. Giving you a maximum degree of safety from cut injuries whilst cleverly protecting your goods.



SECUPRO

FULLY AUTOMATIC BLADE RETRACTION = VERY HIGH SAFETY

The intelligent cutting tool: as soon as the blade leaves the material being cut, it withdraws fully automatically into the handle. Even when you keep on pressing the slider or the lever. That's what we call "a very high degree of safety".



SECUNORM

AUTOMATIC BLADE RETRACTION = HIGH SAFETY

Thumbs up for a high degree of safety. As soon as you start cutting, remove your thumb from the slider and the blade will disappear into the handle the moment it loses contact with the material being cut.

MARTOR® SECUMAX

MARTOR® SECUMAX 350 NO. 350001

- Made of glass fibre reinforced plastic
- 6 mm cutting depth
- Concealed blade
- Maximum work safety and maximum protection of goods
- Incl. soft grip, innovative blade head and spare blade



PRODUCT CODE	DESCRIPTION
920MAE35000102	Martor® Secumax 350 No. 350001
920MAE355020	Martor® Blade No. 3550

MARTOR® SECUMAX 320 NO. 32000110

- Made of glass fibre reinforced plastic
- 4 mm cutting depth
- Concealed blade
- Maximum work safety and maximum protection of goods
- Incl. soft grip and adhesive tape splitter



NEW

PRODUCT CODE	DESCRIPTION
920MAE3200011002	Martor® Secumax 320 No. 32000110
920MAE9204366	Martor® Blade No. 92043

MARTOR® SECUMAX 150 NO. 150001

- Made of glass fibre reinforced plastic
- 6 mm cutting depth
- Concealed blade
- Maximum work safety and maximum protection of goods
- Incl. two cutting edges, splitter and scraper



PRODUCT CODE	DESCRIPTION
920MAE15000108	Martor® Secumax 150 No. 150001

MARTOR® SECUMAX 145 NO. 145001

- Made of glass fibre reinforced plastic
- 4 mm cutting depth
- Concealed blade
- Maximum work safety and maximum protection of goods
- Incl. two cutting edges



PRODUCT CODE	DESCRIPTION
920MAE14500112	Martor® Secumax 145 No. 145001

MARTOR® SECUMAX



MARTOR® SECUMAX EASYSAFE NO. 121001

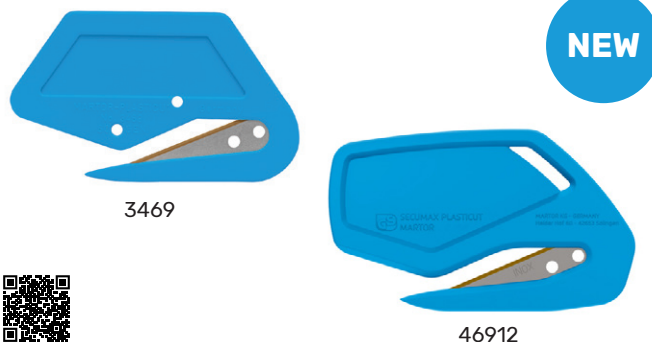
- Made of glass fibre reinforced plastic
- 7 mm cutting depth
- Concealed blade
- Maximum work safety and maximum protection of goods
- Incl. material guide and adhesive tape splitter



PRODUCT CODE	DESCRIPTION
920MAE121001	Martor® Secumax Easysafe No. 121001
920MAE4560	Martor® Blade No. 45

MARTOR® SECUMAX PLASTICUT / PLASTICUT STANDARD

- Stainless steel blade with tin-coated cutting edge
- Pointed nose for piercing
- Concealed blade
- Ideal for cutting wrapping, foil, envelopes, etc.
- Safety finger catch and handle attachment can be ordered separately



NEW



PRODUCT CODE	DESCRIPTION
920MAE346908	Martor® Secumax Plasticut No. 3469
920MAE00046912.16	Martor® Secumax Plasticut Standard No. 46912

MARTOR® SECUMAX 565 NO. 565001

- Cutting edges are not angled, but straight ground
- Stainless steel
- Comfortable and non-slip
- Suitable for people wearing wear gloves at work
- Spikes at the handle to unscrew caps
- Integrated wire cutter
- Ideal for cutting PVC, rubber and other cutting materials



PRODUCT CODE	DESCRIPTION
920MAE56500100	Martor® Secumax 565 No. 565001

MARTOR® SECUMAX 564 / SECUMAX 363

- Made of stainless steel and glass fibre reinforced plastic
- 80 mm cutting edge length
- Specially ground, front rounded cutting edges
- Maximum work safety
- Incl. soft grip and thumb opening



PRODUCT CODE	DESCRIPTION
920MAE56400100	Martor® Secumax 564 No. 564001
920MAE36300100	Martor® Secumax 363 No. 363001

MARTOR® SECUMAX

MARTOR® SECUMAX OPTICUT PULL-CUT MODEL NO. 436

- Made of plastic
- 7 mm cutting depth
- Concealed blade
- Maximum work safety and maximum protection of goods
- Incl. material guide and metal sliding base



PRODUCT CODE	DESCRIPTION
920MAE43600	Martor® Secumax Opticut Pull-Cut Model
920MAE3704060	Martor® Blade No. 37040

MARTOR® SECUMAX OPTICUT PUSH-CUT MODEL NO. 437

- Made of plastic
- 7 mm cutting depth
- Concealed blade
- Maximum work safety and maximum protection of goods
- Incl. material guide and metal sliding base



PRODUCT CODE	DESCRIPTION
920MAE43700	Martor® Secumax Opticut Push-Cut Model
920MAE3704060	Martor® Blade No. 37040

MARTOR® SECUMAX SNITTY NO. 43037

- Concealed blade
- Minimizes product waste
- Ergonomically friendly grip
- Easy, tool free blade change



PRODUCT CODE	DESCRIPTION
920MAE4303700	Martor® Secumax Snitty (1 On Self-Service Card, 10 knives/case)

MARTOR® SECUMAX MOBILEX NO. 45137

- Concealed blade
- Light in all respects
- 4-Cutting edge blade
- Without a tool
- Ten cutting depths
- For left and right handers



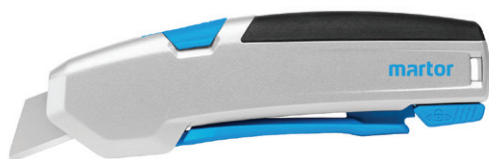
PRODUCT CODE	DESCRIPTION
920MAE4513700	Martor® Secumax Mobilex No.45137

MARTOR® SECUPRO



MARTOR® SECUPRO 625 NO. 625001

- Made of aluminium
- 21 mm cutting depth
- Fully automatic blade retraction
- Very high work safety
- Incl. soft grip, smooth lever and safety lock
- Ideal for thicker materials (rubber, carpeting, etc.) and much more



PRODUCT CODE	DESCRIPTION
920MAE62500102	Martor® Secupro 625 No. 625001
920MAE6009970	Martor® Blade No. 60099

MARTOR® SECUPRO MAXISAFE NO. 10130610

- Made of plastic
- 16mm cutting depth
- Fully automatic blade retraction
- Very high work safety
- Incl. soft grip, smooth lever and safety lock
- Ideal for thicker materials (rubber, carpeting, etc.) and much more



NEW

PRODUCT CODE	DESCRIPTION
920MAE1013061002	Martor® Secumax Maxisafe No. 10130610
920MAE99970	Martor® Blade No. 99



MARTOR® SECUPRO

MARTOR® SECUPRO MARTEGO NO. 122001

- Made of aluminium
- 9 mm cutting depth
- Fully automatic blade retraction
- Very high work safety and high protection of goods
- Incl. soft grip, smooth lever and safety lock



PRODUCT CODE	DESCRIPTION
920MAE12200102	Martor® Secupro Martego No.122001
920MAE9266	Martor® Blade No. 92

MARTOR® SECUPRO MERAK NO. 124001

- Made of plastic
- 9 mm cutting depth
- Fully automatic blade retraction
- Very high work safety and high protection of goods
- Incl. soft grip, smooth lever and safety lock



PRODUCT CODE	DESCRIPTION
920MAE12400102	Martor® Secupro Merak No. 124001
920MAE9266	Martor® Blade No. 92

MARTOR® SECUPRO MEGASAFE NO. 116001

- Made of aluminium
- 17 mm cutting depth
- Fully automatic blade retraction
- Very high work safety
- Incl. soft grip and double-sided slider



PRODUCT CODE	DESCRIPTION
920MAE11600102	Martor® Secupro Megasafe No. 116001
920MAE6009970	Martor® Blade No. 60099

MARTOR® SECUNORM



MARTOR® SECUNORM 500 NO. 50000110

- Made of aluminium
- 17 mm cutting depth
- Automatic blade retraction
- High work safety
- Incl. soft grip and double-sided slider
- Ideal for up to 3-ply cardboard and much more



NEW

PRODUCT CODE	DESCRIPTION
920MAE5000011002	Martor® Secunorm 500 No. 50000110
920MAE6523270	Martor® Blade No. 65232

MARTOR® SECUNORM 540 NO. 54000410

- Made of aluminium
- 36 mm cutting depth
- Automatic blade retraction
- High work safety
- Incl. large slider
- Ideal for thicker materials (foam, polystyrene, etc.) and much more



NEW

PRODUCT CODE	DESCRIPTION
920MAE54000410.02	Martor® Secunorm 540 No. 54000410
920MAE794060	Martor® Blade No. 7940

MARTOR® SECUNORM 300 NO. 30000110

- Made of glass fibre reinforced plastic
- 17 mm cutting depth
- Automatic blade retraction
- High work safety
- Incl. soft grip and double-sided slider
- Ideal for up to 3-ply cardboard and much more



NEW

PRODUCT CODE	DESCRIPTION
920MAE3000011002	Martor® Secunorm 300 No. 30000110
920MAE6523270	Martor® Blade No. 65232

MARTOR® SECUNORM MIZAR NO. 125001

- Made of glass fibre reinforced plastic
- 15 mm cutting depth
- Automatic blade retraction
- High work safety
- Incl. smooth lever and safety lock
- Ideal for up to 3-ply cardboard and much more



PRODUCT CODE	DESCRIPTION
920MAE12500102	Martor® Secunorm Mizar No. 125001
920MAE523270	Martor® Blade No. 5232

MARTOR® SECUNORM

MARTOR® SECUNORM 380 NO. 380001

- Made of glass fibre reinforced plastic
- 73 mm cutting depth, alternatively with serrated blade
- Automatic blade retraction
- High work safety
- Incl. soft grip, large slider and safety lock
- Ideal for thicker materials (foam, polystyrene, etc.) and much more



PRODUCT CODE	DESCRIPTION
920MAE38000102	Martor® Secunorm 380 No. 380001
920MAE97960	Martor® Blade No. 79

MARTOR® SECUNORM 525 NO. 52501410

- Made of aluminium
- 21 mm cutting depth
- Automatic blade retraction
- High work safety
- Incl. large slider



NEW

PRODUCT CODE	DESCRIPTION
920MAE52501410.02	Martor® Secunorm 525 No. 52501410
920MAE19970	Martor® Blade No. 199

MARTOR® SECUNORM 175 NO. 175001

- Made of glass fibre reinforced plastic
- 10 mm cutting depth
- Automatic blade retraction
- Double-sided slider
- Ergonomic handle
- One blade, four cutting corners



PRODUCT CODE	DESCRIPTION
920MAE17500102	Martor® Secunorm 175 No. 175001
920MAE4560	Martor® Blade No. 45

MARTOR® SECUNORM SMARTCUT NO. 110000

- Made of plastic
- 12 mm cutting depth
- Automatic blade retraction
- High work safety
- Incl. double-sided slider



PRODUCT CODE	DESCRIPTION
920MAE110000.02	Martor® Secunorm Smartcut No.110000

MARTOR® MDP CUTTERS

MARTOR® SECUMAX 320 MDP NO. 32000771

- Made of metal detectable plastic
- 4 mm cutting depth
- Concealed, stainless steel blade
- Maximum work safety and maximum protection of goods
- Incl. soft grip and adhesive tape splitter
- Ideal for film, plastic strapping band and much more



PRODUCT CODE	DESCRIPTION
920MAE3200077102	Martor® Secumax 320 MDP No. 32000771
920MAE19204366	Martor® Blade No. 192043

MARTOR® SECUMAX 145 MDP NO. 145007

- Made of metal detectable plastic
- 4 mm cutting depth
- Concealed, stainless steel blade
- Maximum work safety and maximum protection of goods
- Incl. two cutting edges



PRODUCT CODE	DESCRIPTION
	Martor® Secumax 145 MDP No.145007

MARTOR® SECUNORM PROFI40 MDP NO. 11900771

- Made of paint-free aluminium and metal detectable plastic
- 36 mm cutting depth
- Automatic blade retraction
- High work safety
- Incl. single-sided slider and stainless steel blade
- Ideal for up to 3-ply cardboard and much more



PRODUCT CODE	DESCRIPTION
	Martor® Secunorm Profi40 MDP No. 11900771
920MAE1794060	Martor® Blade No. 17940

MARTOR® SECUNORM PROFI25 MDP NO. 120700

- Made of paint-free aluminium and metal detectable plastic
- 21 mm cutting depth
- Automatic blade retraction
- High work safety
- Incl. single-sided slider and stainless steel blade
- Ideal for up to 3-ply cardboard and much more



PRODUCT CODE	DESCRIPTION
920MAE12070002	Martor® Secunorm Profi25 MDP No.120700
920MAE19970	Martor® Blade No. 199



AN OVERVIEW OF ALL MARTOR SAFETY KNIVES

LOGISTICS AND PRODUCTION



SECUMAX 320



SECUMAX 350



SECUMAX 150



SECUMAX 145



SECUMAX EASYSAFE



SECUPRO 625



SECUPRO MARTEGO



SECUNORM SMARTCUT



SECUNORM 500



SECUNORM MIZAR



SECUNORM 175



SECUNORM 300



SECUMAX 564



SECUMAX 565



SECUMAX 363



SECUPRO MEGASAFE



SECUMAX OPTICUT



SECUMAX PLASTICUT



SECUNORM 540



SECUNORM 380



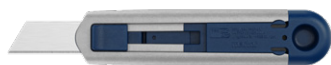
FOOD AND PHARMACEUTICAL



SECUMAX 320 MDP



SECUMAX 145 MDP



SECUNORM PROFI40 MDP



SECUNORM PROFI25 MDP



SLICE CUTTER (CERAMIC BLADE)



SLICE BOX CUTTERS

- Ergo J-Hook handle protects hands during use and limits exposed blade
- Double-sided Slice ceramic blade
- Non-conductive, anti-magnetic blade
- Never rusts, chemically inert blade
- Stays sharp up to 10X longer than steel
- Easy no-tool blade change
- 10400: 3-position manual slider button
- 10503: auto-retractable blade with slider button



PRODUCT CODE	DESCRIPTION
920SLI10400	Slice Box Cutter, Manual 3-Position
920SLI10503	Slice Box Cutter, Auto-Retractable

SLICE UTILITY KNIVES

- Long blade to cut through thick materials-including triple-walled cardboard
- Durable glass-filled nylon (GFN) handle
- Ambidextrous use
- Lanyard hole in back of handle
- Double-sided Slice ceramic blade
- Non-conductive, anti-magnetic blade
- Never rusts, chemically inert blade
- Stays sharp up to 10X longer than steel
- Easy no-tool blade change
- 10550: 5-position side slider button
- 10554: auto-retractable ergonomic side slider pulls to activate
- 10558: smart-retractable ergo-pull slider retracts as soon as it loses contact with cutting material



PRODUCT CODE	DESCRIPTION
920SLI10550	Slice Box Cutter, Manual 3-Position
920SLI10554	Slice Box Cutter, Auto-Retractable
920SLI10558	Slice Utility Knife, Smart-Retractable

SLICE CUTTER (CERAMIC BLADE)

SLICE PRECISION CUTTER

- Zirconium Oxide non-replaceable micro-ceramic blade
- Ideal for intricate shapes
- Durable ABS plastic housing
- Rubberized non-slip finish
- Ambidextrous use
- Non-conductive, anti-magnetic blade
- Never rusts, chemically inert blade, oil-free
- Stays sharp up to 10X longer than steel
- Perfect for PCB rework, cleanrooms, labs

SLICE SAFETY CUTTER

- Finger-Friendly™ microscopic Slice ceramic blade
- Built-in magnet and key-ring hole
- Non-conductive, anti-magnetic blade
- Never rusts, chemically inert blade
- Stays sharp up to 10X longer than steel
- Clean-room friendly no oily blades
- Perfect for removing shrink-wrap, thin film, opening clamshell plastic packaging and flexible packaging, paper, paper rolls, and more



PRODUCT CODE	DESCRIPTION
920SLI00116	Slice Precision Cutter
920SLI00200	Slice Safety Cutter

SLICE BOX CUTTERS

- Lanyard hole in back of handle
- Double-sided Slice ceramic blade
- Non-conductive, anti-magnetic blade
- Never rusts, chemically inert blade
- Stays sharp up to 10X longer than steel
- Easy no-tool blade change
- 10513: 3-position manual slider button
- 10512: auto-retractable blade with slider button



PRODUCT CODE	DESCRIPTION
920SLI10513	Slice Pen Cutter, Manual
920SLI10512	Slice Pen Cutter, Auto-Retractable

SLICE BOX CUTTERS

- Small convenient size and built-in magnet
- Mini box cutter automatically retracts
- Double-sided Slice ceramic blade
- Non-conductive, anti-magnetic blade
- Never rusts, chemically inert blade
- Stays sharp up to 10X longer than steel
- Easy no-tool blade change



PRODUCT CODE	DESCRIPTION
920SLI10514	Slice Mini Cutter, Auto-Retractable

SLICE SCISSORS (CERAMIC WHITE)

SLICE SCISSORS

- Zirconium oxide Slice® safety blades
- Durable reinforced nylon handle with soft-touch finger grips
- Safer than traditional scissors
- Finger-friendly® edge lasts 11x longer than metal
- Reduces injuries, lowers costs
- Chemically inert blade never rusts
- Oil, lubricant, and maintenance free
- BPA-, phthalate-, and lead-free tool
- Lightweight and compact



10544



10546

PRODUCT CODE	DESCRIPTION
920SLI10544	Slice Scissors, Ceramic White
920SLI10546	Slice Scissors, Pointed, Ceramic White

VINYL MATTING



ACCESSORIES

MARTOR® BELT HOLSTERS WITH CLIP

- Belt holsters (in S, M and L) made of flexible and durable nylon
- For safe storage and transport of your MARTOR cutting tools
- Extra compartments for blade packets, pens, etc
- Attach using clip or Velcro fastener



PRODUCT CODE	DESCRIPTION
920MAE992008	Martor® Belt Holster S with Clip
920MAE992108	Martor® Belt Holster M with Clip
920MAE992208	Martor® Belt Holster L with Clip

MARTOR® USED BLADE CONTAINER NO. 981008

- Collect used blades
- Turn lid until it shuts when container is full
- Cannot be reopened
- Safely and completely dispose of the filled used blade container
- *Note: Carelessly discarded blades represent an imminent risk of injury*



PRODUCT CODE	DESCRIPTION
920MAE981008	Martor® Used Blade Container

SLICE TOOL ROLL-UP ORGANIZER (ROLLED UP)



This carrier's sleek, minimalist style is both modern and functional. Crafted with reinforced stitching on 16 interior tool slots, this roll-out tool box also features a large, zipped pocket underneath the tool slot layer. Use this pocket to store loose ends or flexible materials like gloves. Easily find what you need through the clear, reinforced fabric pocket window.

- Made with durable polyester canvas
- PU coating provides exterior and interior water resistance
- Unrolled: 66.5 cm long
- Rolled up, without tools: 19 cm long x 36.5 cm wide
- Features 16 interior tool slots
- Includes 1 large inner pocket layer with zip closure
- Reinforced zipper pull, tool slots, and handle
- Anodized aluminum metal hook fasteners add stability
- Adjustable fastening straps allow optimal sizing
- Double-stitched seams for heavy-duty use

PRODUCT CODE	DESCRIPTION
920SLI10478	Slice Tool Roll-Up Organizer (Rolled Up) [6pcs/inner, 24pcs/cse]